

Exhibition material created by Cité de l'espace for ESA

From 2021-22, Cité de l'espace, Toulouse, France, created several exhibits for the European Space Agency: panels, videos, interactive devices and a hands-on workshop for the general public. This catalogue describes the existing resources and computer programmes and includes downloads of the material for interested museums and organisations to use and share.

LISTING

D1 - ASTRONAUT SELECTION SHOW “How does ESA recruit astronauts?”

- SCRIPT
- POWERPOINT PRESENTATION
- VIDEO SOURCES

D2 - TEAM ALPHA TESTIMONIES

- VIDEOS
- BONUS: NEXT MISSION VIDEOS

D3 - THOMAS PESQUET TOTEM

- VIDEOS

D4 - MEET THOMAS PESQUET

- BRIGHTSIGN APP
- VIDEOS

D5 - MISSION ALPHA REPLAY SERIES

- BRIGHTSIGN APP AND VIDEOS
- BONUS: TOUCHSCREENS (BRIGHTSIGN APP AND VIDEOS)

D6 - EXOMARS AUDIOVIDEO HIGHLIGHTS

- VIDEOS

D7 - ESA Human and Robotic Space Exploration Exhibit (ASTRALIA)

- PRINT
- SOURCES

D8 - ESA activities posters in Astralia Vega room

- PRINT

D10 - Update of Cité de l'espace Columbus Module

- ACCESSIBILITY MODEL OF THE ISS (3D files + graphic files)
- HOLOGRAM LUCA PARMITANO (Brightsign app + videos)

D11 – New Space Transportation wall

- PRINT

D1 - ASTRONAUT SELECTION SHOW “How does ESA recruit astronauts?”

Resources for an interactive workshop on the ESA astronaut selection targeted at the general public.

SCRIPT

Workshop script in French and English

POWERPOINT PRESENTATION

Presentation in French and English

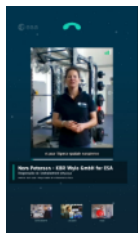
VIDEO SOURCES

Content	Duration	Languages	Format
Matthias Maurer in Cologne	6'25	FR sub EN	mp4
Matthias Maurer from the ISS	6'25	FR	mp4



© Cité de l'espace

D2 - TEAM ALPHA TESTIMONIES



ALPHA TEAMS (videos)

Interviews with the Alpha mission team (from ESA, CNES and scientific institutions).

Content	Duration	Languages	Format
Ecran 1 <ul style="list-style-type: none"> • Frank De Winne (ESA), Head of European Astronaut Centre • Nora Petersen (KBR Wyle GmbH for ESA), Exercise Team Lead • Berti Brigitte Meisinger (ESA), ISS Increment Manager • Alexandre Frechette (KBR Wyle GmbH for ESA), EUROCOM and Increment 65 MedOps Lead 	12'16	Sound : FR Subtitles : FR, EN or SPA	16/9 vertical – HD – mp4
Ecran 2 <ul style="list-style-type: none"> • Rémi Canton (CNES), French Project Manager of Alpha Mission • Cécile Thevenot (CNES), DREAMS Experiment Developer et Rachel Debs (CHU Toulouse), Scientific Director DREAMS Experiment • Adrianos Golemis (MEDES IMPS for ESA - EAC Integrated team), Flight Surgeon 	9'24	Sound : FR Subtitles : FR, EN or SPA	

<p>Ecran 3</p> <ul style="list-style-type: none"> • Kris Capelle (ESA), Head of ISS Increment Training Unit • Laura André Boyet (Lufthansa Aviation training GmbH for ESA), Instructor and simulation director • Maurice Marnat (MEDES), PILOTE Experiment Developer et Laure Boyer (MEDES), PILOTE Experiment Operational Support 	10'04	Sound : FR Subtitles : FR, EN or SPA	
--	-------	---	--



© Cité de l'espace

NEXT MISSIONS (videos)

Video of ESA astronauts Matthias Maurer and Samantha Cristoforetti presenting their training and upcoming (2021) missions to the ISS.

Content	Duration	Languages	Format
Matthias Maurer and Samantha Cristoforetti	4'06	Sound: FR Subtitles : FR, EN or SPA	16/9 horizontal – HD – mp4



© Cité de l'espace



D3 - THOMAS PESQUET HOLOGRAM



ESA astronaut Thomas Pesquet presents his Alpha Mission (scale 1 video).

Duration	Langages	Type of files
1'31	Sound : FR Subtitles : FR, EN or SPA	16/9 – HD – mp4 + extended version for usage on a vertical screen (85' or 88')



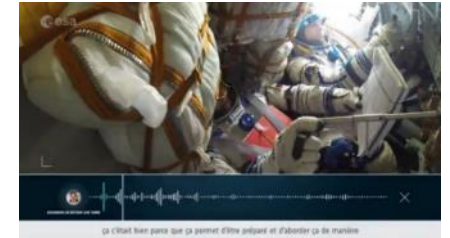
© Cité de l'espace

D4 - MEET THOMAS PESQUET

Brightsign app + video sources

Interactive device on which you can choose different testimonies of ESA astronaut Thomas Pesquet. For each theme, the astronaut compares his first and second mission.

Content	Duration	Languages	Format
Training	1'15	Sound : FR Subtitles : FR, EN or SPA	16/9 HD mp4
Going back to the ISS	1'03	Sound : FR Subtitles : FR, EN or SPA	
Our teamwork	2'18	Sound : FR Subtitles : FR, EN or SPA	
Memories of returning to Earth	2'05	Sound : FR Subtitles : FR, EN or SPA	
Managing stress	2'20	Sound : FR Subtitles : FR, EN or SPA	
On board for a long-term mission	2'08	Sound : FR Subtitles : FR, EN or SPA	

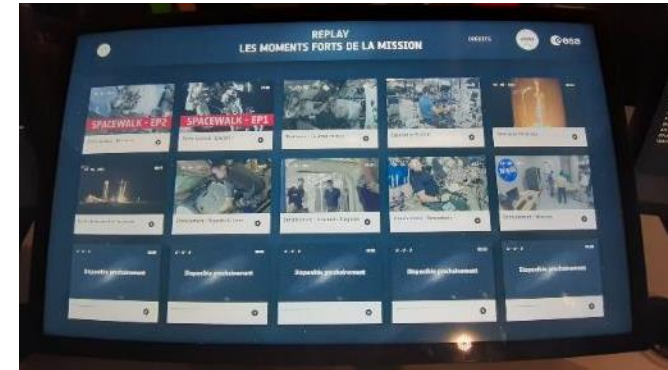


© Cité de l'espace

D5 - MISSION ALPHA REPLAY SERIAL

REPLAY, HIGHLIGHTS OF THE MISSION (Computer app + video sources)

Interactive device with input throughout the mission: ESA videos of the key moments of the mission (unmodified ESA videos).



© Cité de l'espace

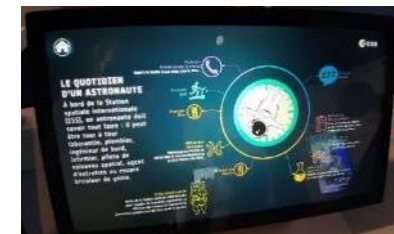
TOUCHSCREENS (Brightsign app + video sources)

Lightly animated presentation of information regarding European space missions to the ISS.

Content	Langages	Format
Earth – ISS ship	FR, EN or SPA	16/9 mp4
The control centres of missions aboard the International Space Station (ISS)	FR, EN or SPA	16/9 mp4
The jobs of the Alpha team	FR, EN or SPA	16/9 mp4
An astronaut's daily life	FR, EN or SPA	16/9 mp4
Europe and the International Space Station	FR, EN or SPA	16/9 mp4
The European Space Agency and the Centre National d'Études Spatiales [French National Centre for Space Studies]	FR, EN or SPA	16/9 mp4
ESA astronauts - Missions aboard the International Space Station (ISS)	FR, EN or SPA	16/9 mp4



© Cité de l'espace



D6 - EXOMARS AUDIOVIDEO HIGHLIGHTS

Animation of Rover Rosalind Franklin presenting its mission and other Martian rovers that came before.



Videos

Content	Duration	Languages	Format
EXOMARS and Rosalind Franklin	6'25	FR sub FR, EN sub EN, or SPA sub SPA	H265 – mp4



© Cité de l'espace

D7 - ESA Human and Robotic Space Exploration Exhibit (ASTRALIA)



Exhibition “EUROPE EXPLORING FOR THE FUTURE” about European exploration of the solar system, toward Moon and Mars. The exhibition is composed of 12 panels designed to be printed in 80x180cm.

“PRINT” folder

The 12 panels are available in: French as main language with translations in English and Spanish, and English as main language with translations in French and Spanish (vectorized files – PDF high resolution, ready to print).

“SOURCES” folder

For implementation in other languages, non-vectorized files are available.

It is possible to change the main language, one or both translations, or to remove one or both translations.

Please notice that changes are only allowed on the existing texts of the panels. Other modifications (graphic design, images, pictograms, logos) are not allowed.



© Cité de l'espace

D8 - ESA activities posters in Astralia Vega room



XXL visuals presenting the main skills of astronauts. The visuals illustrate the activity “How does ESA recruit astronauts?” (D1).

- 8 XXL visuals
- 1 panel introducing ESA and CNES

“PRINT” folder

The visuals are available in French as main language, with translations in English and Spanish (vectorized files – PDF high resolution, ready to print) :

- 7 visuals 2600x4180mm
- 1 visual 3300x2180mm
- 1 panel 780x1700mm

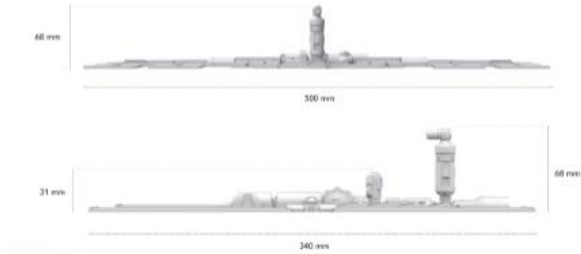
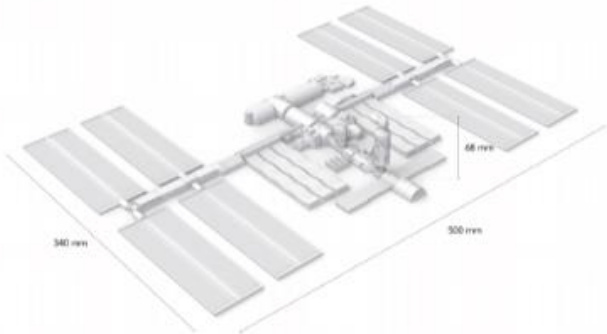
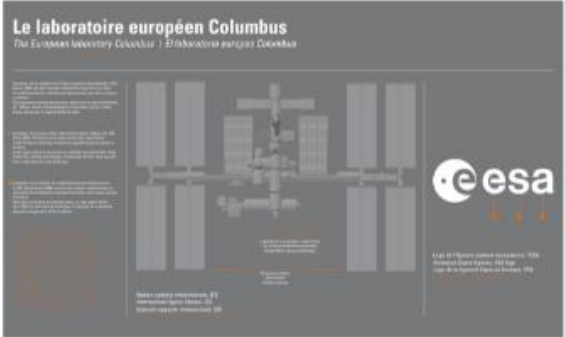


©Cité de l'espace

D10 - Update of Cité de l'espace Columbus Module

ACCESSIBILITY MODEL OF THE ISS (3D files + graphic files)

3D Model of the ISS designed to give a tangible experience, especially to visually impaired people. It displays Columbus' position and the ESA logo.



© Cité de l'espace

HOLOGRAM LUCA PARMITANO (Bightsign app + videos)

Immersive video of Luca Parmitano (scale 1) on black background presenting the Columbus laboratory and how he used it during his ISS missions.



Content	Duration	Languages	Format
Luca Parmitano tells his experience in the Columbus module	4'24	Sound : FR Subtitles : FR, EN or SPA	H264 – mp4 for normal screen or for video projector

[Download 1/2](#)
[Download 2/2](#)



© Cité de l'espace

D11 – New Space Transportation wall

Ensemble of panels presenting the diversity of nowadays launchers with a specific focus on ESA's space transportation projects.



Panels

10 panels designed to be printed in 80x180cm.

Languages: French as main language, translations in English and Spanish



© Cité de l'espace